

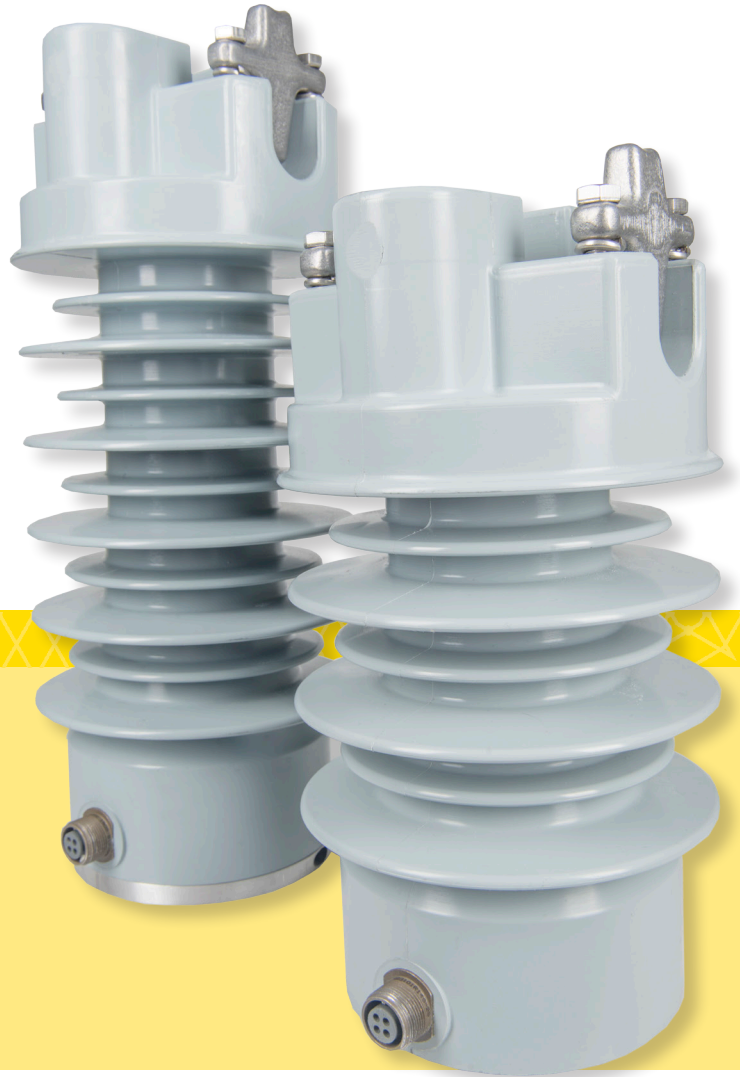
LINE POST SENSOR

LIGHTEST IN THE INDUSTRY

As the lightest in the industry, Hubbell line post sensors have all the features you need and none of the weight you don't

FEATURES

- Lightweight for easy installation and handling
- Improved dielectric performance in coastal, high humidity, and other extreme environmental conditions.
- Superior Strike Distance for better impulse withstand capability
- Accommodates both center pin and 3 inch bolt circle mounting



CATALOG NO.	SENSOR RATING	DESCRIPTION
PSC82011100	15kV, 600A:10V	Current only
PSC82011200	15kV, 1000A:10V	Current only
PSC82011110	15kV, 600A:10V, 10000:1	Current & voltage
PSC82011120	15kV, 600A:10V, 1400:1	Current & voltage
PSC82011210	15kV, 1000A:10V, 10000:1	Current & voltage
PSC82011220	15kV, 1000A:10V, 1400:1	Current & voltage
PSC82012100	25kV, 600A:10V	Current only
PSC82012200	25kV, 1000A:10V	Current only
PSC82012110	25kV, 600A:10V, 10000:1	Current & voltage
PSC82012120	25kV, 600A:10V, 1400:1	Current & voltage
PSC82012210	25kV, 1000A:10V, 10000:1	Current & voltage
PSC82012220	25kV, 1000A:10V, 1400:1	Current & voltage

Hubbell has a policy of continuous product improvement. Please visit hubbelpowersystems.com to confirm current design specifications

SF_10_098_E

ELECTRICAL AND MECHANICAL SPECIFICATIONS

Product	Current Sensor		Voltage Sensor		Current and Voltage Sensors	
Measurement Output	600A:10V		10000:1		600A:10V	10000:1V
					600A:10V	1400:1V
	1000A:10V		1400:1		1000A:10V	10000:1V
					1000A:10V	1400:1V
Nominal Rating (kV)	15	27	15	27	15	27
Rated Line to Ground Voltage (kV)	8.7	15.6	8.7	15.6	8.7	15.6
Positive Impulse Rating or BIL (kV)	110	150	110	150	110	150
Withstand Rating (kV)						
60Hz Dry Withstand	34	50	34	50	34	50
60Hz Wet Withstand	34	50	34	50	34	50
Leakage Distance (Inches)	23.2	35.4	23.2	35.4	23.2	35.4
Dry Arcing Distance (Inches)	9.7	13.2	9.7	13.2	9.7	13.2
Overall Height (Inches)	12.3	15.7	12.3	15.7	12.3	15.7
Partial Discharge Test Voltages (kV)	11	19	11	19	11	19
Maximum Pico Coulomb	Less than 10pC at 125% of nominal; less than 3pC at operating voltage					
Weight (lbs)	17	21	17	21	17	21
Ultimate Cantilever Strength* (lbs)	2800	2800	2800	2800	2800	2800
Temperature Range	65°C to -45°C					
Current Signal Output						
Ratio	600A:10V (or) 1000A:10V					
Output Burden/Load	1 Meg Ohm or Greater					
Accuracy	± 1%					
Phase Shift	0° nominal, ± 1°					
Sensors are calibrated at 300A for optimum accuracy						
Voltage Signal Output						
Ratio	10000:1		1400:1			
Output Burden/Load	1 Meg Ohm or Greater		1 Meg Ohm			
Accuracy	± 1%		± 1%			
Phase Shift	0° nominal, ± 1°		0° nominal, ± 1°			
Conductor Diameter Range (Inches)	0.25 to 1.165					
Material	Cycloaliphatic Epoxy					
* Recommended maximum working load is 40% of the cantilever rating - Per ANSI C29.7						

Hubbell has a policy of continuous product improvement. Please visit hubbellpowersystems.com to confirm current design specifications

SF_10_098_E